

FortiMail™

FortiMail 60D, 200E, 400E, 1000D, 2000E, 3000E, 3200E and VM

FortiMail is a top-rated secure email gateway that stops volume-based and targeted cyber threats to help secure the dynamic enterprise attack surface, prevents the loss of sensitive data and helps maintain compliance with regulations. High performance physical and virtual appliances deploy on-site or in the public cloud to serve any size organization — from small businesses to carriers, service providers, and large enterprises.



Threat Prevention

Powerful antispam, antimalware, sandboxing, anomaly detection and other technologies stop unwanted bulk-email, ransomware, business email compromise and targeted attacks.



Data Protection

Robust data loss prevention, identity-based email encryption and archiving help prevent the inadvertent loss of sensitive information and maintain compliance with corporate and industry regulations.



Security Fabric Integration

Integration with Fortinet products as well as third-party virtual and cloud platforms help customers establish a seamless Security Fabric across the entire attack surface.



Deployment Modes

Mail Gateway
Transparent
Fully Featured Mail Server



FortiCare Worldwide 24/7 Support

support.fortinet.com



FortiGuard Security Services

www.fortiguard.com

Third-Party Certifications

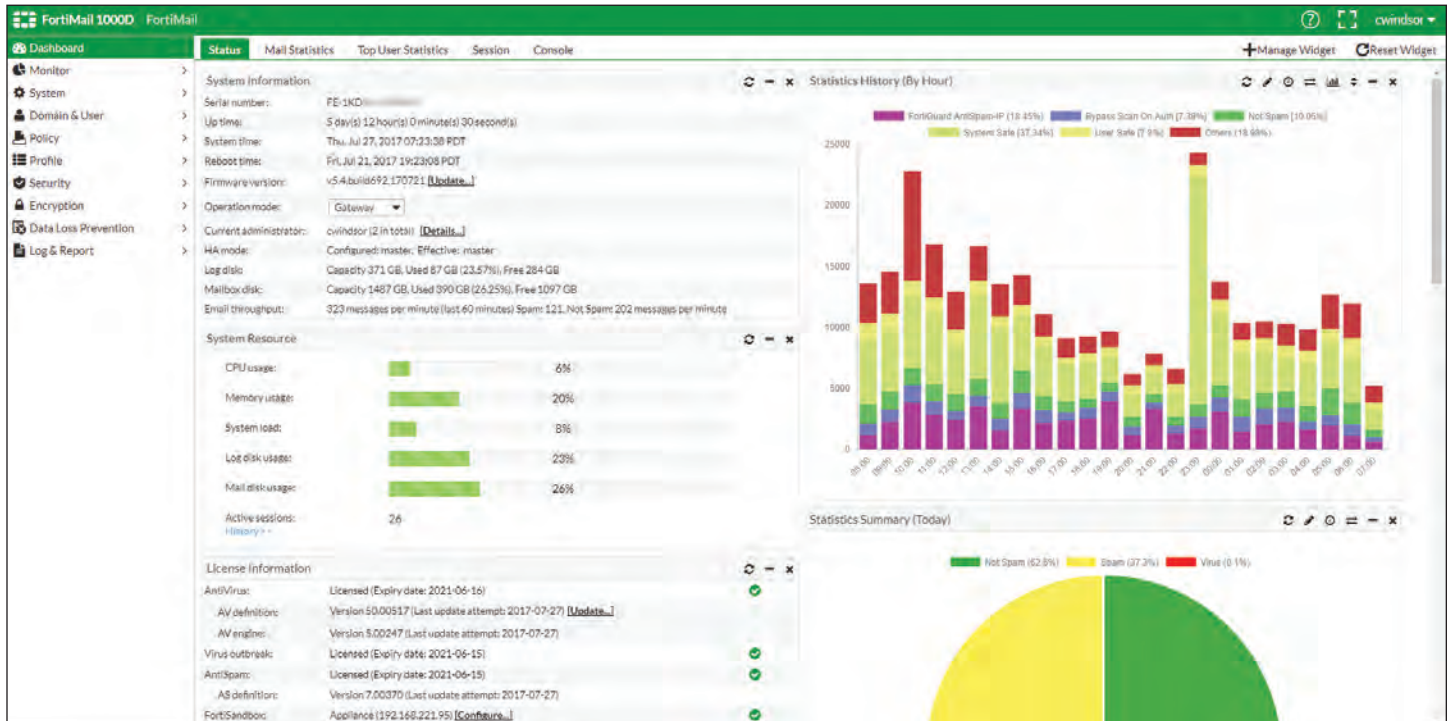


FEATURES

Multi-layered Antispam

More than a dozen sender, protocol and content inspection techniques shields networks and users from unwanted bulk email. It starts with assessing IP, domain and other reputations and continues with various validation methods such as bounce, authentication and recipient verification as well as DKIM and SPF

checks. Finally, message structure and content are analyzed based on digital signature, keywords in context, image analysis, embedded URIs and more advanced techniques such as behavior analysis and spam outbreak protection. Working together, these techniques consistently identify and block 99.98% of spam in real-world conditions.



Antispam profile listing techniques

AntiVirus Profile

Domain: --System--

Profile name: AV_In_Discard

Default action: Discard + New... Edit...

AntiVirus

- Malware/virus outbreak Action: --Default-- + New... Edit...
- Heuristic Action: --Default-- + New... Edit...
- File signature check Action: --Default-- + New... Edit...
- Grayware

FortiSandbox

Scan mode: Submit and wait for result Submit only

- Attachment analysis
- URI analysis
- Malicious/Virus Action: --Default-- + New... Edit...
- High risk Action: --Default-- + New... Edit...
- Medium risk Action: --Default-- + New... Edit...
- Low risk Action: --Default-- + New... Edit...

OK Cancel

AntiVirus Profile – AV and FortiSandbox technique

Powerful Antimalware

Combining multiple static with dynamic technologies which include signature, heuristic and behavioral techniques along with optional virus outbreak prevention and sandboxing, FortiMail protects against a wide range of constantly evolving threats such as ransomware and targeted attacks.

Integrated Data Protection

A robust set of capabilities for data loss prevention, email encryption and email archiving (often used in combination) safely deliver sensitive emails protect against the inadvertent loss of data. This facilitates compliance with corporate policies and industry regulations.

FEATURES

Intuitive Email Management

Real-time dashboards, rich reporting, central quarantines and end user controls along with full MTA and mail handling capabilities provide organizations full visibility and easy control over email traffic.

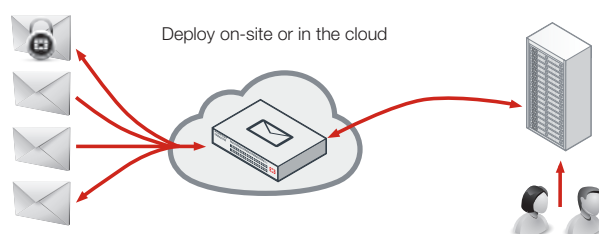
High Performance, Flexible Deployment

Easily scaling to handle more than 1.5m messages per hour with full antispam and antimalware filtering, FortiMail serves organizations of all sizes, with the option to deploy in gateway, transparent or server modes.

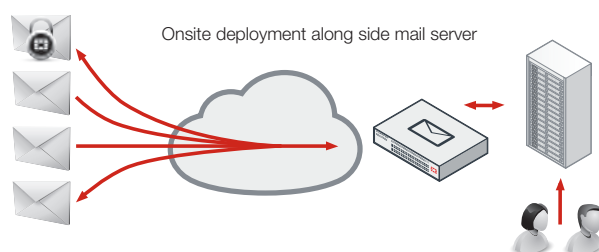
DEPLOYMENT

Choose from three modes of deployment — Transparent, Gateway, or Server mode – to meet your specific email security requirements, while minimizing infrastructure changes and service disruptions:

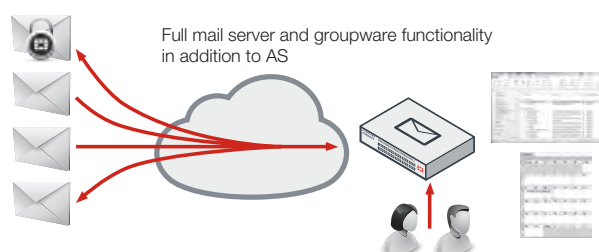
Gateway Mode: Provides inbound and outbound proxy mail transfer agent (MTA) services for existing email gateways. A simple DNS MX record change redirects email to FortiMail for antispam and antivirus scanning. The FortiMail device receives messages, scans for viruses and spam, then relays email to its destination email server for delivery.



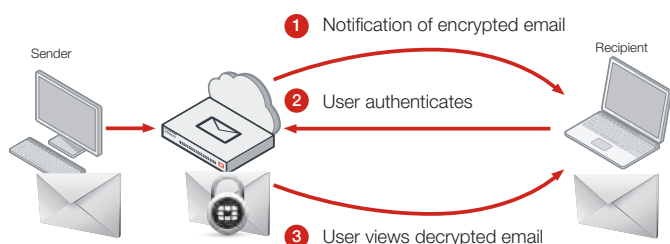
Transparent Mode: Each network interface includes a proxy that receives and relays email. Each proxy can intercept SMTP sessions even though the destination IP address is not the FortiMail appliance. FortiMail scans for viruses and spam, then transmits email to the destination email server for delivery. This eliminates the need to change the DNS MX record, or to change the existing email server network configuration.



Server Mode: The FortiMail device acts as a stand-alone messaging server with full SMTP email server functionality, including flexible support for secure POP3, IMAP and WebMail access. FortiMail scans email for viruses and spam before delivery. As in Server mode, external MTAs connect to FortiMail, allowing it to function as a protected server.



IBE allows FortiMail to deliver confidential and regulated email securely — without requiring additional hardware, software user provisioning, or extra license fees. Use IBE to eliminate paper-based communications and reduce costs.



Policy-Based Encryption: Automatically encrypt messages for compliance, based on content or recipient.

Push or Pull Mode: Use Push, Pull, or a combination of modes to meet your requirements.

Easy to Deploy, Use, and Manage: Deploy IBE in any mode, including Transparent mode, without user provisioning or additional hardware or software.

FEATURES SUMMARY

SYSTEM

- Wide range of deployment options:
 - Transparent, Gateway and Server Mode
 - On-prem or public or private cloud deployment

Inbound and Outbound Inspection

Multiple Email Domains with Domain Level Customization

IPv6 and IPv4 Address Support

Virtual Hosting using Source and/or Destination IP Address Pools

SMTP Authentication Support via LDAP, RADIUS, POP3 and IMAP

LDAP-Based Email Routing

Per User Inspection using LDAP Attributes on a Per Policy (Domain) Basis

Comprehensive Webmail Interface for Server Mode Deployments and Quarantine Management

Mail Queue Management

Multiple Language Support for Webmail and Admin Interface

Email RFC Compliance

Modern HTML 5 GUI

MANAGEMENT, LOGGING, AND REPORTING

Basic/advanced management modes

Per domain, role-based administration accounts

Comprehensive activity, configurations change and incident logging and reporting

Built-in reporting module

Centralized quarantine for large scale deployments

Optional centralized logging and reporting with FortiAnalyzer

SNMP support using standard and private MIB with threshold-based traps

Local or external storage server support, including iSCSI devices

External Syslog support

ANTISPAM

FortiGuard antispam service

- Global sender reputation
- Spam object checksums
- Dynamic Heuristic Rules

Real-time spam outbreak protection

Spam and phishing URLs and email addresses

Full category FortiGuard URL Filtering

Greylisting for IPv4, IPv6 addresses and email accounts

Local sender reputation (IPv4, IPv6 and End Point ID-based)

Behavioral analysis

Deep email header inspection

Integration with third-party spam URI and real-time blacklists (SURBL/RBL)

Newsletter detection

PDF Scanning and image analysis

Block/safe lists at global, domain, and user levels

Support for enterprise sender identity standards:

- Sender Policy Framework (SPF)
- Domain Keys Identified Mail (DKIM)
- Domain-Based Message Authentication (DMARC)

Flexible action and notification profiles

System and user self-service quarantine

HIGH AVAILABILITY (HA)

High availability supported in all deployment scenarios:

- Active-Passive mode
- Active-Active configuration synchronization mode

Quarantine and mail queue synchronization

Device failure detection and notification

Link status, failover and redundant interface support

ANTIMALWARE

FortiGuard Antivirus detection

FortiGuard Virus Outbreak protection

Heuristic-based behavioral detection

Real-time malware outbreak detection

Cloud and On-premise sandbox integration

Password protected archive and PDF decryption

Active content detection (PDF & Office Documents)

Email Threat Neutralization

Rescan for threats on quarantine release

ADVANCED

Server mode deployment with advanced groupware functions

Undo Send (Server Mode)

Policy-based e-mail archiving with remote storage options

– Support for Exchange journal archiving

Comprehensive data-loss prevention with file fingerprinting and sensitive data detection

Identity-based encryption and S/MIME

Dynamic adult image analysis

SAML SSO for Server Mode WebMail

SPECIFICATIONS

	FORTIMAIL 60D	FORTIMAIL 200E	FORTIMAIL 400E
Recommended Deployment Scenarios	Demo, testing, training and small enterprise use with fewer than 100 users*	Small businesses, branch offices, and organizations with fewer than 400 users*	Small-to-mid-sized organizations with up to 1000 users*
Hardware Specifications			
GE RJ45 Ports	4	4	4
GE SFP Interfaces	0	0	0
Storage	1x 500 GB	1x 1TB	2x 1 TB
RAID Storage Management	No	No	Software: 0, 1
Form Factor	Desktop	1U	1U
Power Supply	External	Single	Single (Dual Optional)
System Specifications			
Configured Domains **	2	20	100
Recipient-based Policies (per Domain / per System) — Incoming or Outgoing	15 / 30	60 / 300	400 / 1,500
Server Mode Mailboxes	50	150	400
Antispam, Antivirus, Authentication, and Content Profiles (per Domain / per System)	10 / 15	50 / 60	50 / 200
Performance (Messages/Hour) [Without queuing based on 100 KB message size]			
Email Routing	3.6 K	80 K	157 K
FortiGuard Antispam	3.1 K	71 K	147 K
FortiGuard Antispam + Antivirus	2.7 K	61 K	126 K
Dimensions			
Height x Width x Length (inches)	1.61 x 8.27 x 5.24	1.75 x 17.05 x 13.86	1.73 x 17.24 x 16.38
Height x Width x Length (mm)	41 x 210 x 133	45 x 433 x 352	44 x 438 x 416
Weight	2.4 lbs (1.1 kg)	13.4 lbs (6.1 kg)	25.0 lbs (11.0 kg)
Environment			
Power Source	External Power Supply 19V DC 2.1A 40 W	90–240V AC, 50–60 Hz	100–240V AC, 50–60 Hz
Maximum Current	110V / 2.1A, 220V / 1.2A	100V / 4A, 240V / 2A	100V / 5A, 240V / 3A
Maximum Power Required	22 W	72 W	132 W
Power Consumption (Average)	18 W	60 W	103 W
Heat Dissipation	74 BTU/h	280 BTU/h	482 BTU/h
Humidity	10–90% non-condensing	5–95% non-condensing	5–95% non-condensing
Operating Temperature	32–104°F (0–40°C)	32–104°F (0–40°C)	32–104°F (0–40°C)
Storage Temperature	-13–158°F (-25–70°C)	-13–158°F (-25–70°C)	-13–167°F (-25–75°C)
Compliance			
	FCC Part 15 Class B, C-Tick, VCCI, CE, UL/cUL, CB, RoHS	FCC Part 15 Class A, C-Tick, VCCI, CE, UL/cUL, CB, BSMI, RoHS	FCC Part 15 Class A, C-Tick, VCCI, CE, UL/cUL, CB, BSMI, RoHS
Certification			
	VBSpam and VB100 rated	VBSpam and VB100 rated, Common Criteria NDPP, FIPS 140-2 Compliant	VBSpam and VB100 rated, Common Criteria NDPP, FIPS 140-2 Compliant

* Recommended sizing for Gateway and Transparent deployments. For Server Mode, see Server Mode Mailbox metric. If unsure, please validate the model selection by checking the peak mail flow rates and average message size detail with a FortiMail specialist.

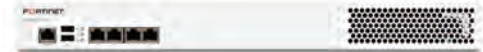
** Configured domains is the total number of email domains that can be configured on the appliance. Domain Associations can be used to enable additional domains which share configuration with the primary domain to which they are assigned.



FortiMail 60D



FortiMail 200E



FortiMail 400E

SPECIFICATIONS

	FORTIMAIL 1000D	FORTIMAIL 2000E	FORTIMAIL 3000E	FORTIMAIL 3200E
Recommended Deployment Scenarios				
	Mid to large enterprise, education and government departments with up to 3000 users*	Large enterprise, education and government departments*	Highest performing appliance for the largest University, corporate, ISP and carrier customers	Highest performing appliance for the largest University, corporate, ISP and carrier customers
Hardware Specifications				
GE RJ45 Ports	6	4	4	4
GE SFP Interfaces	2	2	2	2
10GE SFP+ Interfaces	0	0	0	2
Storage	2x 2 TB (2x 2 TB Optional)	2x 2 TB (6x 2 TB Optional)	2x 2 TB SAS (10x 2 TB Optional)	2x 2 TB (10x 2 TB Optional)
RAID Storage Management	Hardware: 1, 5, 10, Hot Spare (Based on Drive Count)	Hardware: 1, 5, 10, 50, Hot Spare (Based on Drive Count)	Hardware: 1, 5, 10, 50, Hot Spare (Based on Drive Count)	Hardware: 1, 5, 10, 50, Hot Spare (Based on Drive Count)
Form Factor	2U	2U	2U	2U
Power Supply	Dual	Dual	Dual	Dual
System Specification				
Configured Domains **	800	800	2,000	2,000
Recipient-Based Policies (per Domain / per System) — Incoming or Outgoing	800 / 3,000	800 / 3,000	1,500 / 7,500	1,500 / 7,500
Server Mode Mailboxes	1,500	2,000	3,000	3,000
Antispam, Antivirus, Authentication, and Content Profiles (per Domain / per System)	50 / 400	50 / 400	50 / 600	50 / 600
Performance (Messages/Hour) [Without queuing based on 100 KB message size]				
Email Routing	680 K	1.1 Million	1.8 Million	1.8 Million
FortiGuard Antispam	620 K	1.0 Million	1.6 Million	1.6 Million
FortiGuard Antispam + Antivirus	500 K	900 K	1.5 Million	1.5 Million
Dimensions				
Height x Width x Length (inches)	3.50 x 17.24 x 14.49	3.5 x 17.2 x 25.5	3.5 x 17.2 x 25.5	3.5 x 17.2 x 25.5
Height x Width x Length (mm)	88 x 438 x 368	89 x 437 x 647	89 x 437 x 647	89 x 437 x 647
Weight	27.6 lbs (12.52 kg)	32 lbs (14.5 kg)	40.0 lbs (18.2 kg)	40.0 lbs (18.2 kg)
Environment				
Power Source	100–240V AC, 50–60Hz	100–240V AC, 50–60Hz	100–240V AC, 50–60Hz	100–240V AC, 50–60Hz
Maximum Current	100V / 5A, 240V / 3A	10.0A / 110V, 3.5A / 240V	9.8A / 110V, 4.9A / 220V	9.8A / 110V, 4.9A / 220V
Maximum Power Required	138 W	219 W	379W	382W
Power Consumption (Average)	115 W	189 W	348W	351W
Heat Dissipation	471 BTU/h	781 BTU/h	1325 BTU/h	1336 BTU/h
Humidity	5–95% non-condensing	8–90% non-condensing	8% to 90% non-condensing	8% to 90% non-condensing
Operating Temperature	32–104°F (0–40°C)	41–95°F (5–35°C)	50–95°F (10–35°C)	50–95°F (10–35°C)
Storage Temperature	-13–158°F (-25–70°C)	-40–140°F (-40–60°C)	-40–158°F (-40–70°C)	-40–158°F (-40–70°C)
Compliance				
	FCC Part 15 Class A, C-Tick, VCCI, CE, UL/cUL, CB, BSMI, RoHS	FCC Part 15 Class A, C-Tick, VCCI, CE, UL/cUL, CB, BSMI, RoHS	FCC Part 15 Class A, C-Tick, VCCI, CE, UL/cUL, CB, BSMI, RoHS	FCC Part 15 Class A, C-Tick, VCCI, CE, UL/cUL, CB, BSMI, RoHS
Certification				
	VBSspam and VB100 rated, Common Criteria NDPP, FIPS 140-2 Certified	VBSspam and VB100 rated, Common Criteria NDPP, FIPS 140-2 Compliant	VBSspam and VB100 rated, NDPP, FIPS 140-2 Compliant	VBSspam and VB100 rated, NDPP, FIPS 140-2 Compliant

* Recommended sizing for Gateway and Transparent deployments. For Server Mode, see Server Mode Mailbox metric. If unsure, please validate the model selection by checking the peak mail flow rates and average message size detail with a FortiMail specialist.

** Configured domains is the total number of email domains that can be configured on the appliance. Domain Associations can be used to enable additional domains which share configuration with the primary domain to which they are assigned.



FortiMail 1000D



FortiMail 2000E



FortiMail 3000E and 3200E

SPECIFICATIONS

TECHNICAL SPECIFICATIONS FOR FORTIMAIL VIRTUAL APPLIANCES	VM00	VM01	VM02	VM04	VM08	VM16	VM32
Recommended Deployment Scenarios	Demo, testing, training and small enterprise use with fewer than 100 users*	Small businesses, branch offices, and organizations with fewer than 400 users*	Small to midsized organizations with up to 1000 users*	Mid to large enterprise with up to 3000 users*	Large enterprise	Large enterprise	Large enterprise
Technical Specifications	VMware ESXi 5.0/5.1/5.5/6.0/6.5, Citrix XenServer 5.6 SP2/6.0 or later, Microsoft Hyper-V 2008 R2/2012/2012 R2, KVM (qemu 0.12.1), AWS (Amazon Web Services), Microsoft Azure ****						
Hypervisors Supported	VMware ESXi 5.0/5.1/5.5/6.0/6.5, Citrix XenServer 5.6 SP2/6.0 or later, Microsoft Hyper-V 2008 R2/2012/2012 R2, KVM (qemu 0.12.1), AWS (Amazon Web Services), Microsoft Azure ****						
Maximum Virtual CPUs Supported	1	1	2	4	8	16	32
Virtual NICs Required (Minimum/Maximum)	1 / 4	1 / 4	1 / 4	1 / 6	1 / 6	1 / 6	1 / 6
Virtual Machine Storage Required (Minimum/Maximum)	50 GB / 1 TB	50 GB / 1 TB	50 GB / 2 TB	50 GB / 4 TB	50 GB / 8 TB	50 GB / 12 TB	50 GB / 24 TB
Virtual Machine Memory Required (Minimum/Maximum)	1 GB / 2 GB	1 GB / 4 GB	1 GB / 8 GB	1 GB / 16 GB	1 GB / 16 GB	1 GB / 128 GB	1 GB / 128 GB
Performance (Messages/Hour) [Without queuing based on 100 KB message size] **							
Email Routing	3.6 K	34 K	67 K	306 K	675 K	875 K	1.2 M
FortiGuard Antispam	3.1 K	30 K	54 K	279 K	630 K	817 K	1.1 M
FortiGuard Antispam + Antivirus	2.7 K	26 K	52 K	225 K	585 K	758 K	1.0 M
System Specifications							
Configured Domains ***	2	20	100	800	2,000	2,000	2,000
Recipient-Based Policies (Domain / System) — Incoming or Outgoing	15 / 30	60 / 300	400 / 1,500	800 / 3,000	1,500 / 7,500	1,500 / 7,500	1,500 / 7,500
Server Mode Mailboxes	50	150	400	1,500	3,000	3,000	3,000
Antispam, Antivirus, Authentication, and Content Profiles (per Domain / per System)	10 / 15	50 / 60	50 / 200	50 / 400	50 / 400	50 / 600	50 / 600

* Recommended sizing for Gateway and Transparent deployments. For Server Mode, see Server Mode Mailbox metric. If unsure, please validate the model selection by checking the peak mail flow rates and average message size detail with a FortiMail specialist.

** Hardware dependent. Indicative figures based on multiple VMs running on a shared system.

*** Configured domains is the total number of email domains that can be configured on the appliance. Domain Associations can be used to enable additional domains which share configuration with the primary domain to which they are assigned.

**** Transparent mode deployment is not fully supported on Microsoft HyperV and cloud hypervisors due to limitations in the available network configurations.

ORDER INFORMATION

Product	SKU	Description
FortiMail 60D	FML-60D	Email Security Appliance — 4x GE RJ45 ports, 500 GB storage.
FortiMail 200E	FML-200E	Email Security Appliance — 4x GE RJ45 ports, 1 TB storage.
FortiMail 400E	FML-400E	Email Security Appliance — 4x GE RJ45 ports, 2 TB storage.
FortiMail 1000D	FML-1000D	Email Security Appliance — 6x GE RJ45 ports, 2x GE SFP slots, dual AC power supplies, 4 TB default storage.
FortiMail 2000E	FML-2000E	Email Security Appliance — 4x GE RJ45 ports, 2x GE SFP slots, dual AC power supplies, 4 TB default storage.
FortiMail 3000E	FML-3000E	Email Security Appliance — 4x GE RJ45 ports, 2x GE SFP slots, dual AC power supplies, 4 TB default storage.
FortiMail 3200E	FML-3200E	Email Security Appliance — 4x GE RJ45 ports, 2x 10 GE SFP+ slots, 2x GE SFP slots, dual AC power supplies, 4 TB default storage.
FortiMail VM00	FML-VM00	FortiMail-VM virtual appliance for VMware ESX/ESXi, Microsoft Hyper-V, Citrix XenServer and KVM virtualization platforms. 1x vCPU core.
FortiMail VM01	FML-VM01	FortiMail-VM virtual appliance for VMware ESX/ESXi, Microsoft Hyper-V, Citrix XenServer and KVM virtualization platforms. 1x vCPU core.
FortiMail VM02	FML-VM02	FortiMail-VM virtual appliance for VMware ESX/ESXi, Microsoft Hyper-V, Citrix XenServer and KVM virtualization platforms. 2x vCPU cores.
FortiMail VM04	FML-VM04	FortiMail-VM virtual appliance for VMware ESX/ESXi, Microsoft Hyper-V, Citrix XenServer and KVM virtualization platforms. 4x vCPU cores.
FortiMail VM08	FML-VM08	FortiMail-VM virtual appliance for VMware ESX/ESXi, Microsoft Hyper-V, Citrix XenServer and KVM virtualization platforms. 8x vCPU cores.
FortiMail VM16	FML-VM16	FortiMail-VM virtual appliance for VMware ESX/ESXi, Microsoft Hyper-V, Citrix XenServer and KVM virtualization platforms. 16x vCPU cores.
FortiMail VM32	FML-VM32	FortiMail-VM virtual appliance for VMware ESX/ESXi, Microsoft Hyper-V, Citrix XenServer and KVM virtualization platforms. 32x vCPU cores.
Accessories		
AC power adapter	SP-FG80D-PDC	Replacement AC power adapter for FML-60D.
Rack mount tray for FML-60D	SP-RACKTRAY-01	Rack mount tray for FML-60D.
PSU for FML-400E	SP-FAD700-PS	Additional AC power supply for FML-400E.
HDD for FML-1000D	SP-D2000	2 TB 3.5" SATA hard drive with tray for FML-1000D.
HDD for FML-3000E	SP-D2TE	2 TB 3.5" SAS hard drive with tray for FML-2000E, FML-3000E and FML-3200E.
Power supply for FML-2000E	SP-FML2000E-PS	Replacement AC power supply for FML-2000E.
Power supply for FML-3000E and FML-3200E	SP-FML3000E-PS	Replacement AC power supply for FML-3000E and FML-3200E.



GLOBAL HEADQUARTERS
Fortinet Inc.
899 KIFER ROAD
Sunnyvale, CA 94086
United States
Tel: +1.408.235.7700
www.fortinet.com/sales

EMEA SALES OFFICE
905 rue Albert Einstein
06560 Valbonne
France
Tel: +33.4.8987.0500

APAC SALES OFFICE
300 Beach Road 20-01
The Concourse
Singapore 199555
Tel: +65.6395.2788

LATIN AMERICA SALES OFFICE
Sawgrass Lakes Center
13450 W. Sunrise Blvd., Suite 430
Sunrise, FL 33323
United States
Tel: +1.954.368.9990