

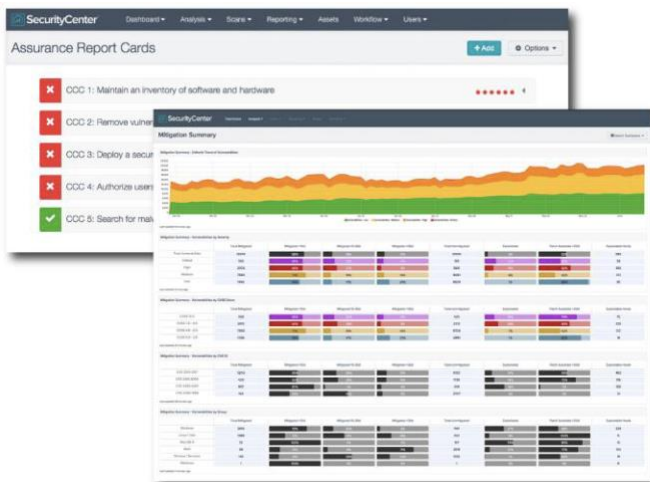
The Tenable.sc™ platform provides the most comprehensive and integrated view of enterprise security posture to reduce business risk and ensure compliance.

VULNERABILITY MANAGEMENT MANAGED ON-PREM

Tenable.sc is a vulnerability management solution that provides visibility into your attack surface so you can manage and measure your cyber risk. Tenable.sc does this through advanced analytics, customizable dashboards/reports and workflows to identify weaknesses on your network connected assets, by identifying all vulnerabilities, misconfigurations and malware on them.

Built on leading Nessus technology, Tenable.sc gathers and evaluates vulnerability data across multiple Nessus® scanners distributed across your enterprise and illustrates vulnerability trends over time to assess risk and prioritize vulnerabilities. Finally, Tenable.sc includes a configurable workflow engine that helps your security team speed up response and remediation, to reduce overall risk and streamline compliance.

Tenable.sc includes Assurance Report Cards® (ARCs), which enable you to continuously measure, analyze and visualize the effectiveness of your security program, based on high-level business objectives and underlying customizable policies that CISOs and executives care about.



Tenable.sc provides highly customizable vulnerability analytics, trending, reporting and workflows to suit the needs of your security program

KEY BENEFITS

- Identify weaknesses by scanning network connected assets for known vulnerabilities, misconfigurations and malware
- Prioritize vulnerabilities with the greatest impact and understand the likelihood a given vulnerability will be exploited in the next 28 days
- Assess how well patch management is working based on vulnerability trends over time
- Rapidly respond to changes with configurable alerts, notifications and automated actions
- Measure security posture based on security policies that aligned with high-level business objectives

TENABLE RESEARCH

The Tenable Research team provides frequent updates of vulnerability and threat intelligence, advanced analytics, security/compliance policies, dashboards, reports and Assurance Report Cards to all Tenable.sc customers. This out-of-the box content is based on industry and customer best practices gathered by Tenable, putting the power of our security research team at your disposal. This content is part of the Tenable.sc subscription.

KEY FEATURES

- **Assurance Report Cards:** continuously measure the effectiveness of customer-defined security policies based on high-level business objectives to identify and close potential gaps.
- **Vulnerability Priority Rating:** combines threat intelligence and machine learning to determine the likelihood a vulnerability will be exploited in your unique environment.
- **Highly customizable dashboards/reports:** new HTML5- based user interface to satisfy specific needs of CISOs, security management, analysts and practitioners/operators.
- **Broad asset coverage:** assess servers, endpoints, network devices, operating systems, databases and applications in physical, virtual and cloud infrastructures.
- **Dynamic asset classification:** group assets based on policies that meet specific criteria; e.g., Windows 7 assets with vulnerabilities > 30 days old.
- **Vulnerability management:** multiple scanning options, including non-credentialed and credentialed scanning for deep analysis and

configuration auditing.

- **Agent-based scanning:** available for organizations to more easily scan mobile and hard to reach assets.
- **Managed security posture:** scan hosts, virtual, mobile and security devices for vulnerabilities, misconfigurations and malware using customizable schedules and black-out windows.
- **Cumulative scan results:** consolidate data from multiple on premises Nessus scanners and provide remediation trending information.
- **Advanced analytics/trending:** provide contextual insight and actionable information to prioritize security issues associated with security posture of all enterprise assets.
- **Incident Response/Workflows:** configurable workflows and alerts for administrators to take manual actions via emails, notifications, trouble tickets or take automated actions.
- **Tiered management model:** support for organizations that distribute responsibilities across multiple geographies and teams using role-based access control.
- **Automated load balancing:** optimize (parallelize) scan cycles in distributed environments.

- **Integrations:** use out-of-box integrations with patch management, mobile device management, threat intelligence and other third-party products, or use Tenable.sc APIs to develop custom integrations.
- **Streamlined compliance:** pre-defined checks for industry standards and regulatory mandates, such as CERT, DISA STIG, DHS CDM, FISMA, SCADA, PCI DSS, HIPAA/HITECH and more.

TENABLE.SC EDITIONS

Tenable.sc

Tenable.sc is the next-generation vulnerability analytics solution that includes multiple Nessus scanners, the world’s most widely deployed vulnerability scanner. It provides the most comprehensive visibility into the security posture of their distributed and complex IT infrastructure.

Tenable.sc Continuous View™

Tenable.sc Continuous View is the market-leading continuous network monitoring platform. It integrates Tenable.sc along with multiple Nessus Network Monitor sensors and network traffic and event monitoring to provide comprehensive continuous network monitoring.

Capabilities	Tenable.sc	Tenable.sc Continuous View
Centralized vulnerability management with multiple scanners	<input type="checkbox"/>	<input type="checkbox"/>
Dynamic asset classification (mail server, web server, etc.)	<input type="checkbox"/>	<input type="checkbox"/>
Policy-based configuration auditing	<input type="checkbox"/>	<input type="checkbox"/>
Malware detection with built-in threat Intelligence	<input type="checkbox"/>	<input type="checkbox"/>
Pre-defined dashboards/reports with automatic feeds from Tenable	<input type="checkbox"/>	<input type="checkbox"/>
Incident response with configurable alerts, notifications, ticketing	<input type="checkbox"/>	<input type="checkbox"/>
Assurance Report Cards (ARCs)	<input type="checkbox"/>	<input type="checkbox"/>
Vulnerability Priority Rating (VPR)	<input type="checkbox"/>	<input type="checkbox"/>
Continuous asset discovery (virtual, mobile, cloud)		<input type="checkbox"/>
Passive vulnerability detection of new and “unsafe-to-scan” assets		<input type="checkbox"/>
Real-time detection of botnet and command & control traffic		<input type="checkbox"/>
Anomaly detection using statistical/behavioral techniques		<input type="checkbox"/>
Streamlined compliance with proactive alerts on violations		<input type="checkbox"/>

For More Information: Please visit tenable.com | Contact Us: Please email us at [sales@tenable.com/contact](mailto:sales@tenable.com)