



# **WE GET NEW CHALLENGES REQUIRE NEW SOLUTIONS.**

To utilize technology to best support the medical community, you need IT Orchestration by CDW®.

Over the past month, CDW has worked closely with many large metropolitan hospitals and clinics to creatively and swiftly identify potential impacted patients and keep them safely away from their patients seeking traditional care. CDW has taken lessons learned from our metro customers and has created a set of Rapid Deploy Connectivity Solutions for our small and medium hospitals and clinics.

While there are many options that can be put together to solve this need, CDW has architected a best-of-breed solution to help our healthcare providers efficiently set up a tent.

## **At a high level, the solution is comprised of the following:**

- Wireless Switch and Access Points
- Stackable Switch
- Uninterrupted Power Supply for Power Protection (UPS)
- Mount Kits
- Cat5e/6 Cables and Velcro Straps
- 6u Rolling Rack Case



## **Rapid Deploy Connectivity Solutions**

### **Small Rural Hospital or Clinic**

1 Access Point  
50 Clients  
Can be Hardwired as Well

### **Medium Rural Hospital or Clinic**

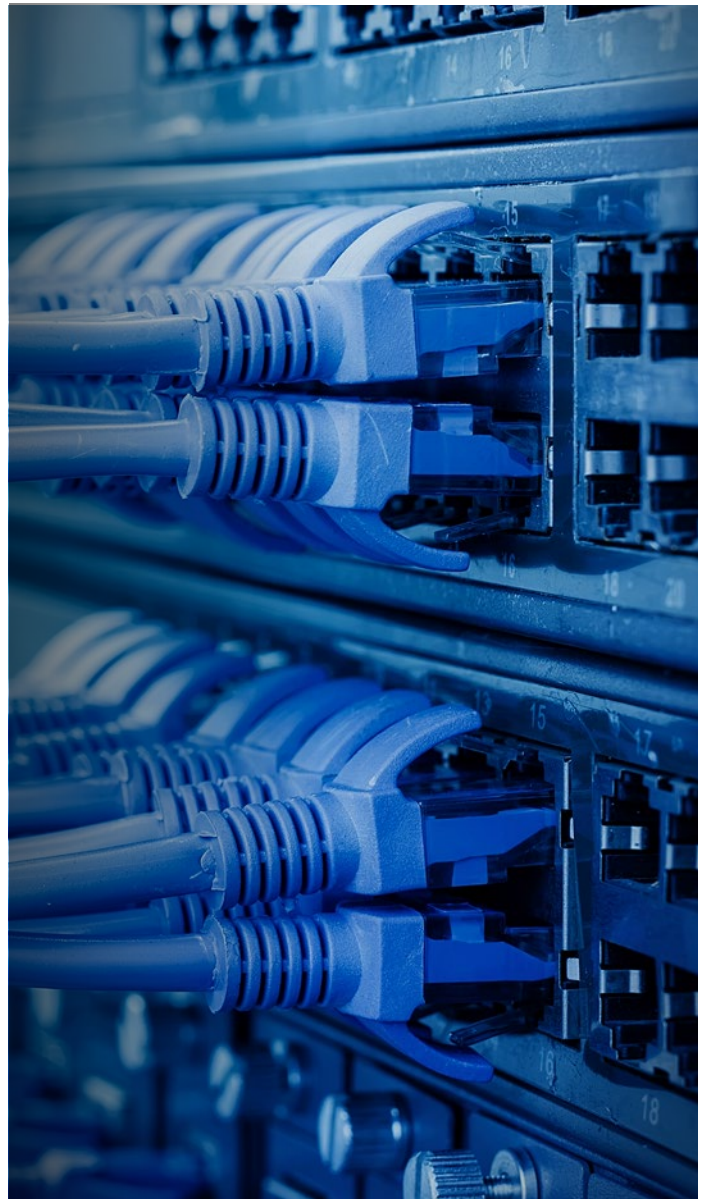
Base Unit with 1 Additional Access Point  
100 Clients – 200'–300'  
(Order 1 per 100 Clients)  
Can be Hardwired as Well

## Rapid Deploy Connectivity Solutions Small Rural Hospital or Clinic

<b>Portable Unit:</b>			
Description	MFG PN	EDC	List US\$
<a href="#">Case: SKB 6U Rack Case</a>	1SKB-R6UW	5135393	\$300.00
<a href="#">UPS: CyberPower 800 Watt 1000 VA</a>	PR1000LCDRT1U	3331768	\$456.00
<b>Wireless Configuration:</b>			
<a href="#">Cradlepoint e300</a>	BF01-0300C18B-GN	6053952	\$1409.00
<a href="#">Cisco Stackable 2960 Switch</a>	WS-C2960X-48TD-L	3103115	\$3315.99
Choose a SIM card and cell provider from chart below			

## Medium Rural Hospital or Clinic

<b>Portable Unit:</b>			
Description	MFG PN	EDC	List US\$
<a href="#">Case: SKB 6U Rack Case</a>	1SKB-R6UW	5135393	\$300.00
<a href="#">UPS: CyberPower 800 Watt 1000 VA</a>	PR1000LCDRT1U	3331768	\$456.00
<b>Wireless Configuration:</b>			
<a href="#">Cradlepoint AER2200</a>	BA1-2200120B-NNN	5769877	\$1600.00
<a href="#">Cisco Stackable 2960 Switch</a>	WS-C2960X-48TD-L	3103115	\$3315.99
<a href="#">2nd Gigabit LTE Modem</a>	BA-MC400-1200M-B	5738357	\$600.00
<a href="#">Rack Mount Kit</a>	170749-001	5536188	\$40.00
<a href="#">Cloud Managed AP</a>	BC1-0A22-0U0	4949216	\$369.00
<a href="#">50' Cat5e Ethernet Cable</a>	M45PATCH50BL	469878	\$14.00
<a href="#">100' Cat5e Ethernet Cable</a>	21471	1151986	\$25.00
<a href="#">200' Cat5e Ethernet Cable</a>	19145	2594171	\$50.00
<a href="#">Velcro Straps</a>	29858	1196786	\$5.00
Choose two SIM cards and cell provider(s) from chart below, one per modem			



### Choose SIM card(s) and cell provider(s), one per modem

The Small Rural Hospital or Clinic build has 1 cellular modem and needs only 1 SIM card and 1 cell provider.

The Medium Rural Hospital or Clinic build has 2 cellular modems so make sure to make selections for both modems below.

You can have one modem with Verizon and the other modem with AT&T or both from the same.

Description	AT&T		T-Mobile		Verizon	
	MFG PN	EDC	MFG PN	EDC	MFG PN	EDC
SIM Card	<a href="#">DFILLSIM2FF-AT&amp;T</a>	5097602	<a href="#">CDP-DFILLSIM2FF-TM</a>	5122342	<a href="#">CDP-DFILLSIM2FF-VZ</a>	5122332
SIM Install	<a href="#">DINSERTSIM</a>	5106701	<a href="#">DINSERTSIM</a>	5106701	<a href="#">DINSERTSIM</a>	5106701
Activate SIM (No SCAN)	<a href="#">ATTACTW/ODVCS</a>	2608855	<a href="#">TMACTW/ODVCS</a>	2608845	<a href="#">WRNACTW/ODVCS</a>	2608862

To get started, please contact your  
CDW Account Team at 800.800.4239

